

KOMATSU VANGUARD SERIES



Hydraulic Excavator Lineup

Crawler type
PC100/100L/150/150LC/
200/200LC/220/220LC/
300/300LC/400/400LC
Wheel type
PW150

Date received



Advanced PC Series Hydraulic Excavators from Komatsu

Komatsu, one of the world's leading manufacturers of construction equipment, offers a wide range of hydraulic excavators to meet all your excavating job requirements. These tough excavators are equipped with many remarkable features, including low fuel consumption designs, efficient control systems, extra-comfortable operator compartments and refined external features.

In addition, every Komatsu hydraulic excavator is manufactured under our total production system. This includes the manufacture of everything from steel casting and vital hydraulic components to engine parts. You'll find Komatsu quality makes a difference throughout our hydraulic excavators.

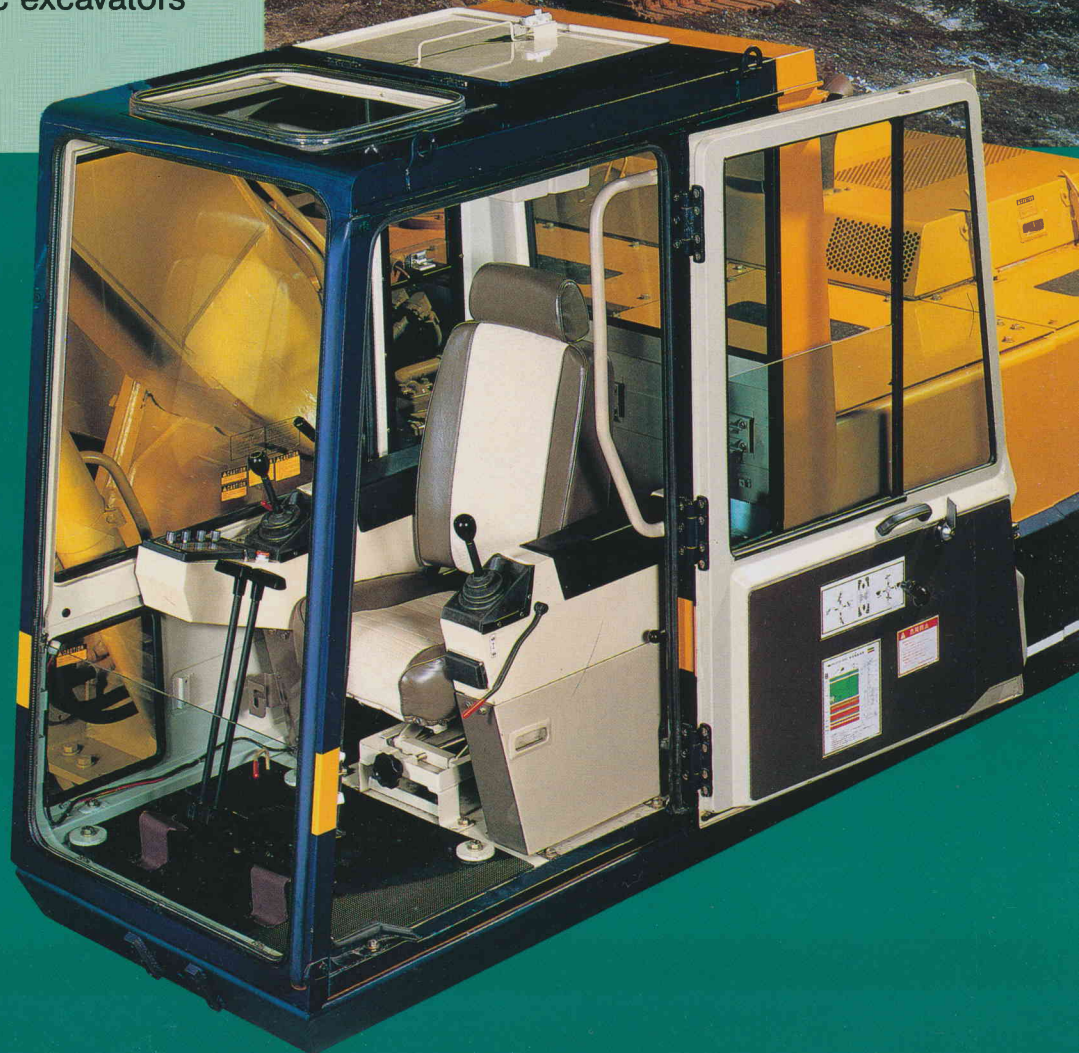
Some of Komatsu hydraulic excavators' sophisticated features are introduced here.



A newly designed cab provides plenty of workspace and excellent visibility.

The 940 mm (3'1") wide cab meets ISO standards and passes the world's strictest regulations, providing ample work space and excellent visibility through the tinted glass window that not only softens strong sunshine but also increases the cooling efficiency of the optional air conditioner. Other features include a reclining seat with armrests, and headrest, a pull-up front glass window and an easy-to-clean floor (a floor mat is optionally available).

A control-valve-operated swing system enhances the smoothness of controls, light-touch wrist-control levers, and other devices in the cab.





CANADIAN SPEC. UNITS HAVE 3 - MODE SYSTEM (HEAVY - STANDARD & LIGHT DUTY)

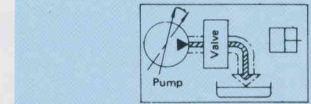
Two-mode selection system for high excavation efficiency.

The mode selection switch determines pump driving torque in either the STANDARD or LIGHT-DUTY mode. By choosing the best matched mode selection, operating efficiency is enhanced. The STANDARD mode is designed for general digging/loading operations. The LIGHT-DUTY mode makes it possible to maintain a short

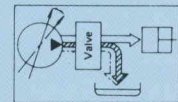
cycle time while saving fuel. Choose this mode when the excavator is loading light materials, hoisting light loads, or doing slope-finishing work.

The advanced monitoring system.

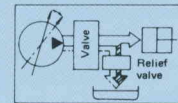
The Komatsu monitoring system not only allows fast daily checks but also informs the operator of any abnormality during operation.



Reduction of neutral loss



Reduction of fine control loss



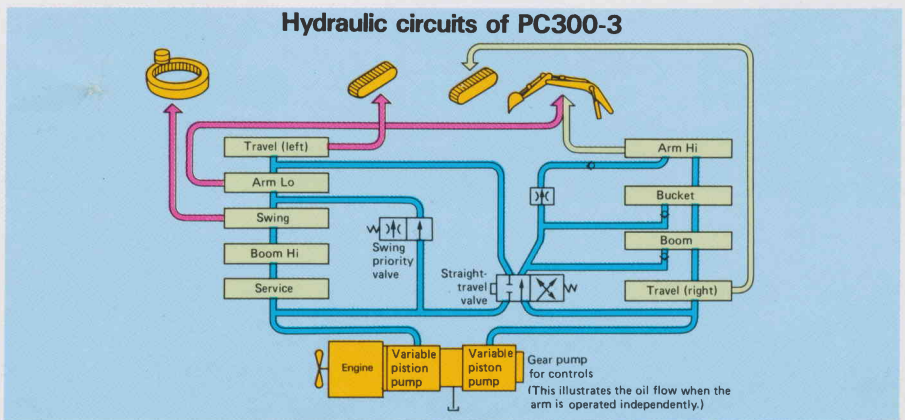
Reduction of relief loss

Komatsu's OLSS system minimizes various types of hydraulic losses.

The OLSS (Open-center Load Sensing System) is built into hydraulic circuits as a hydraulic subsystem that reduces three types of hydraulic losses (neutral, fine control and relief losses) and realizes full use of engine output. Depending on hydraulic oil flow and oil pressure, the OLSS controls oil output from piston pumps, minimizing the flow of unused oil.



The Komatsu-built diesel engine with a direct-injection system for reduced fuel consumption: Komatsu excavators make the best use of engine power thanks to the sophisticated power-efficient hydraulic system.



An arm merge circuit shortens cycle time.

An arm merge circuit makes it possible to perform smooth compound bucket movements and high-speed bucket/arm action, resulting in shortened cycle time. This feature makes each Komatsu hydraulic excavator one of the most productive excavators in its class—especially in leveling and slope-finishing where frequent arm action is required.

Straight-travel valve.

In case the work equipment is operated and/or swing action is performed during the machine travels, the straight-travel valve automatically goes into action to interlock the hydraulic circuits to the left and right travel motors. As a result, the excavator can maintain straight-forwarding since each travel motor can obtain the same amount of oil.

Full Choice of Komatsu Hydraulic Excavators

PC100

WT: 10700 kg (23,590 lb)
 FH: 79 HP (59 kW)
 at 2100 RPM
 CAP: 0.18 ~ 0.56 m³
 (0.24 ~ 0.73 cu.yd)



PC100L

WT: 12800 kg (28,220 lb)
 FH: 79 HP (59 kW)
 at 2100 RPM
 CAP: 0.18 ~ 0.56 m³
 (0.24 ~ 0.73 cu.yd)



PC120

WT: 11600 kg (25,570 lb)
 FH: 84 HP (63 kW)
 at 2200 RPM
 CAP: 0.18 ~ 0.61 m³
 (0.24 ~ 0.80 cu.yd)



PC200LC

WT: 19140 kg (42,200 lb)
 FH: 118 HP (88 kW)
 at 2100 RPM
 CAP: 0.36 ~ 1.40 m³
 (0.47 ~ 1.83 cu.yd)



PC220

WT: 22000 kg (48,500 lb)
 FH: 148 HP (110 kW)
 at 2100 RPM
 CAP: 0.44 ~ 1.26 m³
 (0.58 ~ 1.65 cu.yd)



PC300LC

WT: 30800 kg (67,900 lb)
 FH: 197 HP (147 kW) at 1550 RPM
 CAP: 0.50 ~ 1.80 m³
 (0.65 ~ 2.35 cu.yd)



PC400

WT: 40000 kg (88,180 lb)
 FH: 266 HP (199 kW) at 2000 RPM
 CAP: 1.30 ~ 2.20 m³
 (1.70 ~ 2.88 cu.yd)



WT: Operating weight FH: Flywheel horsepower (SAE J1349) CAP: Bucket capacity range (SAE heaped)

PC150

WT: 14700 kg (32,410 lb)
FH: 99 HP (74 kW)
at 2200 RPM
CAP: 0.57 ~ 0.75 m³
(0.75 ~ 0.98 cu.yd)



PC150LC

WT: 15300 kg (33,730 lb)
FH: 99 HP (74 kW)
at 2200 RPM
CAP: 0.57 ~ 0.75 m³
(0.75 ~ 0.98 cu.yd)



PC200

WT: 18000 kg (39,680 lb)
FH: 118 HP (88 kW)
at 2100 RPM
CAP: 0.36 ~ 1.40 m³
(0.47 ~ 1.83 cu.yd)



PC220LC

WT: 23130 kg (50,990 lb)
FH: 148 HP (110 kW)
at 2100 RPM
CAP: 0.44 ~ 1.26 m³
(0.58 ~ 1.65 cu.yd)



PC300

WT: 29000 kg (63,930 lb)
FH: 197 HP (147 kW)
at 1550 RPM
CAP: 0.50 ~ 1.80 m³
(0.65 ~ 2.35 cu.yd)



PC400LC

WT: 42000 kg (92,590 lb)
FH: 266 HP (199 kW) at 2000 RPM
CAP: 1.30 ~ 2.20 m³
(1.70 ~ 2.88 cu.yd)



PW150

WT: 15500 kg (34,170 lb)
FH: 85 HP (63 kW) at 2400 RPM
CAP: 0.45 ~ 0.75 m³
(0.59 ~ 0.98 cu.yd)



Other sophisticated features

Full-open type machine cover: Hinged hood and side covers allow quick access to internal components for easy maintenance.



L/LC (long crawler) models: Extended crawlers and wide shoes keep them stable as they carry out heavy excavation work on rough terrain. Their low ground pressure enables them to maneuver in relatively soft terrain, thus diversifying applications.

Travel motors are of the in-shoe type, with hydraulic piping built into the X-leg type center frame; this prevents damage due to external obstructions.

A wheel type model is also provided. Thanks to its high maneuverability, it can move from one jobsite to another in a short period of time without the need for a carrier.



Materials and specifications are subject to change without notice.

KOMATSU